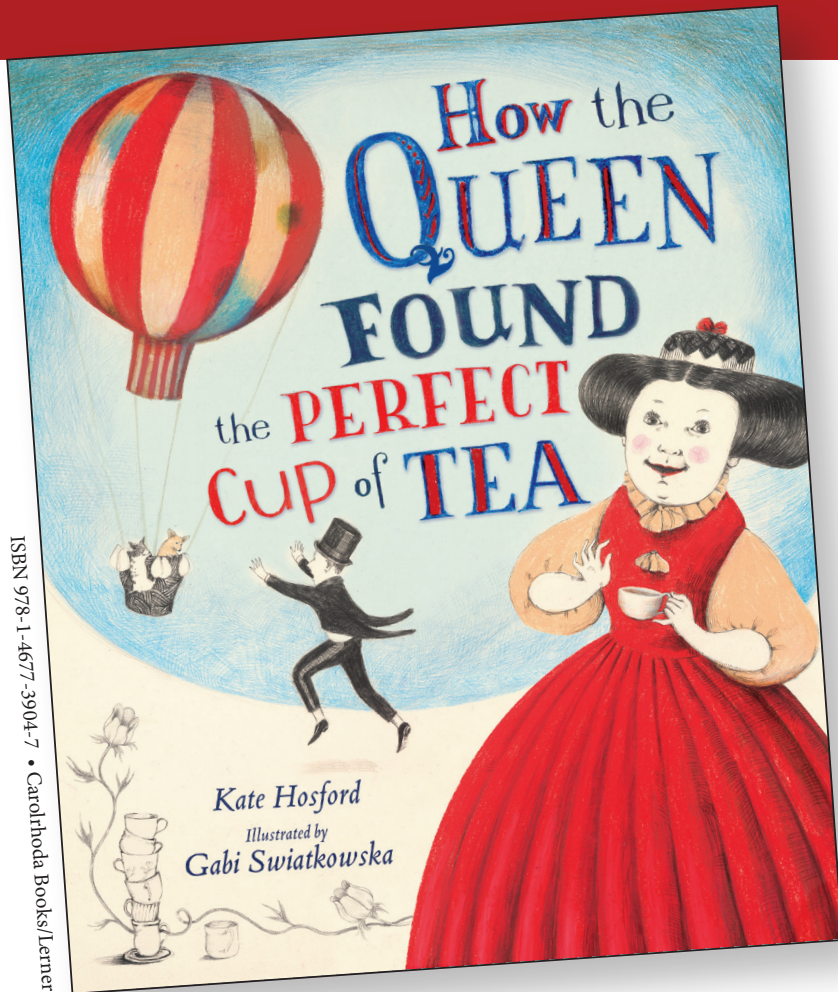


CURRICULUM GUIDE



ACTIVITIES THE Queen most certainly does not do:

Strenuous kitty snuggling.

Vigorous soccer dribbling.

Spirited dancing.

Making tea.

Until, one day, she grows dissatisfied with the tea her butler has prepared, and a culinary and cross-cultural hot-air balloon adventure begins.



"An imperious monarch embarks on a quest in this wry story from the team behind *Infinity and Me*. . . Swiatkowska's delicious, old-world pastels render each character a distinct individual. . . The details give Hosford's round-the-world tale offbeat charm, and readers will smile as they watch the Queen shed her haughtiness and embrace her own capabilities."

—PUBLISHERS WEEKLY

"Droll entertainment that calls out for an international tea party."

—KIRKUS REVIEWS



khosford.com • lernerbooks.com

The Common Core State Standards addressed by the discussion questions and activities in this guide are noted throughout. For more information on the Common Core, visit corestandards.org.

DISCUSSION QUESTIONS



The Queen has many people who take care of her each morning—from helping her dress and doing her hair, to making her tea. With all of this help, why is the Queen so unhappy?

[CCSS.ELA-LITERACY.RL.1.1](#); [CCSS.ELA-LITERACY.RL.2.1](#); [CCSS.ELA-LITERACY.RL.3.1](#)



Why does the Queen go with her butler James on an adventure in a hot air balloon?

[CCSS.ELA-LITERACY.RL.1.1](#); [CCSS.ELA-LITERACY.RL.2.1](#); [CCSS.ELA-LITERACY.RL.3.1](#)



The Queen commands for the hot air balloon to land and she meets Noriko. What does it mean that the Queen “walked with her nose in the air” when she met the young girl?

[CCSS.ELA-LITERACY.RL.1.4](#); [CCSS.ELA-LITERACY.RL.3.4](#)



Noriko asks the Queen to do two things that the Queen has never done. What are these two things and how does the Queen react to following Noriko’s directions?

[CCSS.ELA-LITERACY.RL.1.3](#); [CCSS.ELA-LITERACY.RL.2.3](#); [CCSS.ELA-LITERACY.RL.3.3](#)



Who does the Queen meet on the second stop of her journey? What did this boy ask the Queen to try before they shared a cup of tea?

[CCSS.ELA-LITERACY.RL.1.1](#); [CCSS.ELA-LITERACY.RL.2.1](#); [CCSS.ELA-LITERACY.RL.3.1](#)



The Queen and her butler travel once again in the hot air balloon and land in a new place where they meet Rana. What does Rana ask the Queen to do?

[CCSS.ELA-LITERACY.RL.1.1](#); [CCSS.ELA-LITERACY.RL.2.1](#); [CCSS.ELA-LITERACY.RL.3.1](#)



What tea-making steps did the Queen do by herself when asked by each child to help make the tea?

[CCSS.ELA-LITERACY.RL.1.1](#); [CCSS.ELA-LITERACY.RL.2.1](#); [CCSS.ELA-LITERACY.RL.3.1](#)



After their third stop, the Queen commands that her butler take her home. What special deliveries did the Queen have James make once they arrived back at the palace?

[CCSS.ELA-LITERACY.RL.1.1](#); [CCSS.ELA-LITERACY.RL.2.1](#); [CCSS.ELA-LITERACY.RL.3.1](#)



How does the Queen’s morning routine change after her search for the perfect cup of tea?

[CCSS.ELA-LITERACY.RL.1.3](#); [CCSS.ELA-LITERACY.RL.2.3](#); [CCSS.ELA-LITERACY.RL.3.3](#)



What was the Queen’s announcement at the tea party?

[CCSS.ELA-LITERACY.RL.1.1](#); [CCSS.ELA-LITERACY.RL.2.1](#); [CCSS.ELA-LITERACY.RL.3.1](#)

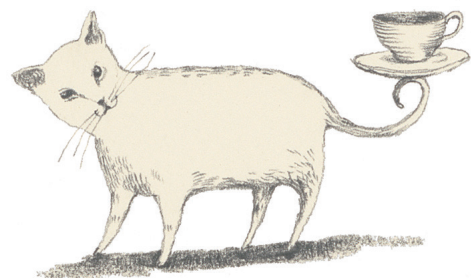


What did the Queen learn from her journey to find the perfect cup of tea?

[CCSS.ELA-LITERACY.RL.1.2](#);

[CCSS.ELA-LITERACY.RL.2.2](#);

[CCSS.ELA-LITERACY.RL.3.2](#)



ACTIVITIES



The Queen “floats over hilltops, meadows, and seas” in search of the perfect cup of tea. The children that she meets on her journey are from Japan, India, and Turkey. Find these countries on a globe or a map to see how far the Queen had to travel to locate a perfect cup of tea.



The Queen’s butler, James, accompanies her in the hot air balloon as she travels the world in search of the perfect tea. Imagine what James was thinking as he helped the Queen communicate with the different children she met on her trip. Rewrite the story of the Queen’s journey from James’ point of view.

[CCSS.ELA-LITERACY.W.1.3](#); [CCSS.ELA-LITERACY.W.2.3](#); [CCSS.ELA-LITERACY.W.3.3](#)



Assemble a small recipe book on how to make the perfect cup of tea. Include a page each for the Queen, Noriko, Sunil, and Rana. List the ingredients each person used and the steps to make the perfect cup of tea.

[CCSS.ELA-LITERACY.RL.1.1](#); [CCSS.ELA-LITERACY.RL.2.1](#); [CCSS.ELA-LITERACY.RL.3.1](#)



On her journey, the Queen discovers so much more than how to make the perfect cup of tea; she discovers how to talk and laugh and to share. Design invitations to a class tea. Invite another class over for tea and conversation. Do a formal reading of *How the Queen Found the Perfect Cup of Tea* aloud at your party with students taking the roles of narrator, the Queen, James, Noriko, Sunil, and Rana.



The discussion questions and activities in this guide were created by Leigh Courtney, Ph.D. She teaches in the Global Education program at a public elementary school in San Diego, California. She holds both master’s and doctoral degrees in education, with an emphasis on curriculum and instruction.



PICTURE THIS

The Queen's mood changes over the course of the story—from when she first awakes and drinks a horrible cup of tea, to her tea party with her new friends. Look through the illustrations in the book to see how the Queen felt at certain points in the story. Select a word that best describes the Queen's mood at each story event listed in the chart below and draw a picture of the Queen's face to show how she felt.

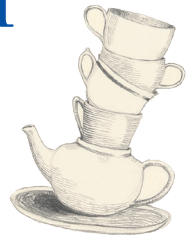
CCSS.ELA-LITERACY.RL.1.7; CCSS.ELA-LITERACY.RL.2.7; CCSS.ELA-LITERACY.RL.3.7

Story event	Word to describe the Queen's mood	Drawing of the Queen's face during this story event
The Queen awakes and maids help her with her clothes and hair. Her butler makes her a cup of tea.		
The Queen meets Noriko who asks the Queen to snuggle with Noriko's kitties.		
The Queen discovers that dribbling the ball with Sunil is "rather vigorous."		
The Queen helps Rana make tea by pouring water from the faucet to fill the kettle.		
The Queen hosts a tea party for her new friends.		

MAPPING THE STORY

Using a Circular Plot Diagram

The story begins with the Queen in her home and then follows the Queen on her journey to find the perfect cup of tea. The story ends where it began. Fill in the circular plot diagram below with setting and story events in the order in which they happened. Remember, the beginning and the ending of the story have the same setting.



CCSS.ELA-LITERACY.RL.2.5; CCSS.ELA-LITERACY.RL.3.5

ENDING

BEGINNING

Setting: _____

Events: _____

Setting: _____

Events: _____

Setting: _____

Events: _____

Setting: _____

Events: _____

Setting: _____

Events: _____





THE QUEEN'S ENGLISH

The Queen uses some rich vocabulary on her travels to find the perfect cup of tea. Use a dictionary to find the definitions of the Queen's fancy words and add them to the chart below. Also include the guide words for each of the words you look up in the dictionary.

CCSS.ELA-LITERACY.L.2.4.E; CCSS.ELA-LITERACY.L.3.4.D

FANCY WORD	GUIDE WORDS	DEFINITION
<i>Vigorous</i>		
<i>Precisely</i>		
<i>Absolutely</i>		
<i>Commanded</i>		
<i>Strenuous</i>		